



# CPMS

## CLINICAL PATIENT MANAGEMENT SYSTEM

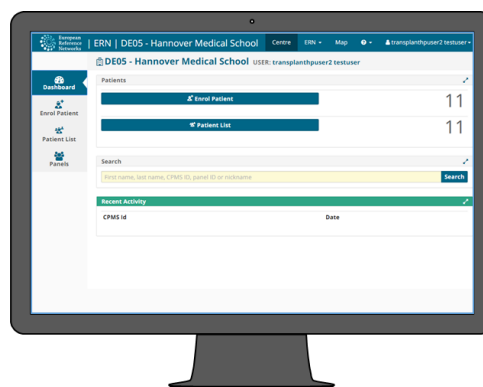


### European Reference Network

for rare or low prevalence complex diseases

 **Network**  
Transplantation in Children  
(ERN TRANSPLANT-CHILD)

ERNs are virtual networks involving healthcare providers across Europe. They aim to tackle **complex or rare diseases and conditions.**



### Clinical Patient Management System



CPMS is a secure web based application that supports ERN members in the diagnosis and treatment of low prevalence complex conditions across national borders.



# CPMS - VIRTUAL CONSULTATION

Luis was **heart transplanted** 2 years ago in La Paz University Hospital, but he lives in Soria, a small town in Spain.



Luis and his family go to Madrid regularly for the medical check-ups. Luis has developed a **complication** after transplantation.



CPMS is a secure application, to **share pseudo-anonymized clinical cases** with other paediatric transplant experts in Europe.

The doctor who is treating Luis decides to upload his case to CPMS for advice from the **European Reference Network TransplantChild.**





Luis's doctor will **upload the clinical information of the case**, including medical documents, radiological studies, laboratory tests etc.



A **panel of experts** from different European centres will be invited to participate to provide advice on this transplant complication.



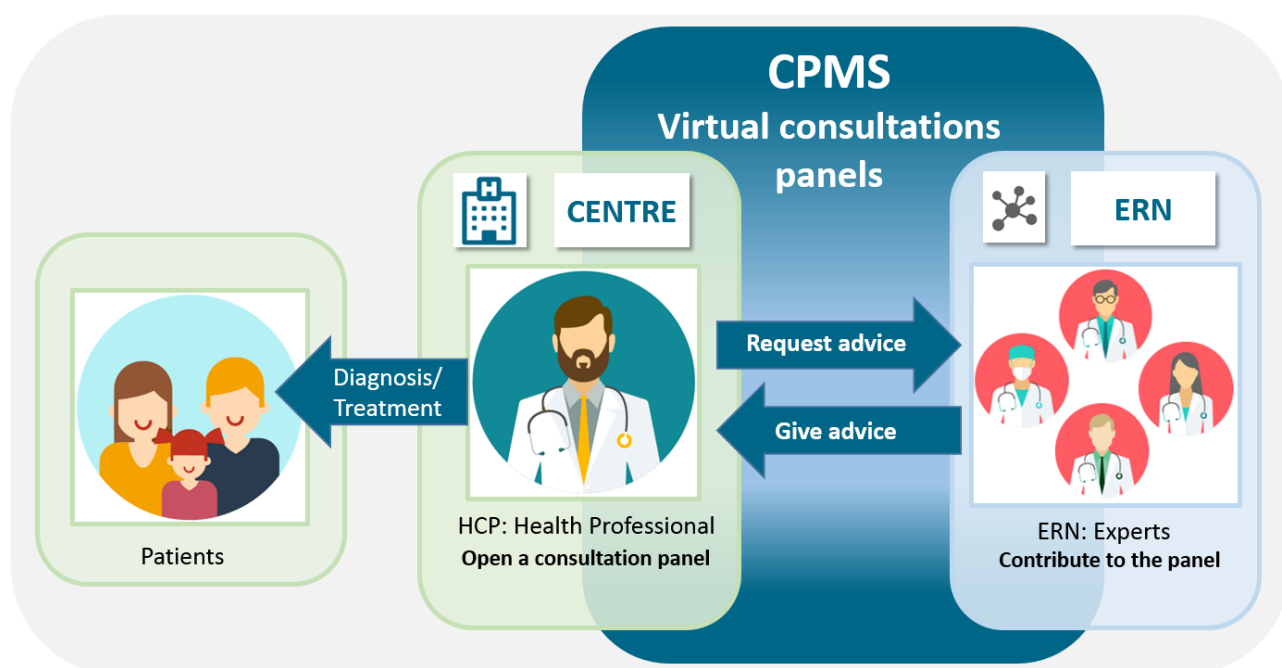
The case will be **discussed by the experts**, sharing their opinion and experience through the CPMS panel.

The doctor, supported **on the advice** received, **will treat** Luis for his post-transplant complication.



## How is the virtual consultation process in CPMS?

ERNs' virtual consultations are carried out through the CPMS system. Experts from different areas of rare diseases and complex procedures can provide their advice on clinical cases. Within TransplantChild ERN, experts from 18 different centres from Europe are participating in the system.



## How can I access to CPMS?

The system is accessible for members of the European Reference Networks. TransplantChild members can already use CPMS for virtual consultation.

**Please, contact your doctor for more information about this process or visit the TransplantChild website.**



@TransplantChild



[www.transplantchild.eu](http://www.transplantchild.eu)



[coordination@transplantchild.eu](mailto:coordination@transplantchild.eu)



ERN TransplantChild

